



# T9 DESIGN

## TACTICAL SOLUTIONS



# ***MATCH YOUR GEAR***

**T9-Design Ltd.** specializes in developing , designing and manufacturing technical textiles products for top Israeli Defense Industries . Our company has accumulated experience of 10 years working with various security agencies in Israel and abroad. Company employees have served in combat units with Combat experience, Understand the current operational requirements. Our products are manufactured and tested in accordance with the Quality Assurance, as well as in strict adherence to ISO 9001 Standards.





# ***MATCH YOUR GEAR***

- I.D.F Military combat experience.
- Tailor made products.
- Flexibility & Customized product based on needs.
- quality control, handmade & supervised production.
- Young & dynamic .
- Obligated to international standards ISO-9001.
- Divers line of product. Emphasize on tactical military & homeland security.
- Ability to develop & manufacture small and large quantities.



1. M.O.L.L.E Drop Leg Pouch  
2. Tactical Handgun Holster -T9-W17  
3. Israel Flag-tag

4. M.O.L.L.E Armarmor vest- T9-AV98  
5. Robot pouch  
6. M.O.L.L.E Cable channel

7. M.O.L.L.E. Battery pouch  
8. M.O.L.L.E. Waist-belt  
9. M.O.L.L.E. Toughbook commanding-panel



# ***ASSAULT VESTS***

**T9-Design's** Tactical Vests are designed and developed in cooperation with the Israeli police Task-Force personnel and army (IDF) specialists, based on the vast experience accumulated in numerous civil unrests, battlefields, and trainings.





# ASSAULT VESTS

The **Multi-Purpose Assault Vest** is the ultimate selection amongst the T9Design's Everest vest line.

MOLLE based design allowing high flexibility in pouches' selection to match mission requirements. Quick and easy to put on and off, perfectly fit for long or short combats in all type of terrains and scenarios.



VL-31-MD



VL-31-GR



VL-31  
**Multi-Purpose Assault Vest**

# ***ARMORED VESTS***

The MOLLE Armor is designated for up to 3A protection level, with optional ballistic protection plates (HxW: 300x250mm). MOLLE based design of the armor allows easy configuration and customization, adding and removing pouches in according with the different type of activities.





# ARMORED VESTS



AV-89

PLATE SIZE	25\30 cm
POUCHES	Fix pouches
BACK SUPORT	STD
TEXTILE	cordura



AV-90

PLATE SIZE	25\30 cm
POUCHES	M.O.L.L.E
BACK SUPORT	STD
TEXTILE	cordura



AV-98

PLATE SIZE	25\30 cm
PUCHES	M.O.L.L.E
BACK SUPORT	ergonomic system
TEXTILE	cordura

# ***ARMORED VESTS***

A unique **ergonomic back system**, with padded shoulder straps that provides ease and comfort while carrying backpacks, carriers or stretchers.





# ***PERSONAL ARMOR SOLUTIONS***

Flexibility, Efficiency, Attractive prices and minimum weight are the principles which give our products distinct advantages over any other producer of ballistic defense elements. This product is Personal armor plates for the purpose of protection from shooting and shrapnel. The elements are lighter than other products on the market, protected from mechanical and chemical damage, have significantly lower cost and longer life span than the other competing products.



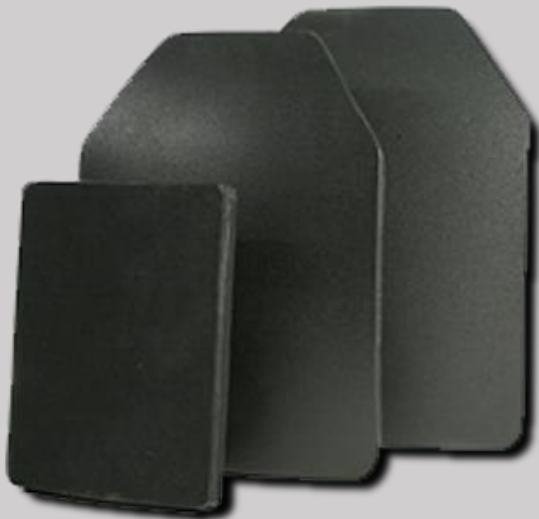
# PERSONAL ARMOR SOLUTIONS



SIZE	M\L\ML
WEIGHT	variable
LEVEL	IIIA
BACKUP	-----
COVER	ULY400



SIZE	25\30 cm
WEIGHT	3.5kg
LEVEL	IV
BACKUP	ICW*
COVER	ULY400



SIZE	25\30 cm
WEIGHT	1.6kg
LEVEL	III
BACKUP	STD*
COVER	cordura



# ***BACKPACK***

OUR **BACKPACK** COMES IN A VARIETY OF SIZES TO MEET THE NEEDS OF ANY MISSION.

THE BAGS SIZES DESIGNED UNDER THE **T9-DESIGN** DIVIDING SYSTEM OF LOAD CAPACITY. SIZES ARE CHOSEN TO MEET THE NEEDS OF -12, 24, 48 & 72 HOURS MISSIONS WITH THE CAPABILITY OF ADDING AN ALUMINIUM FRAME WHEN NEEDED.





# BACKPACK

THE **COMMANDO SERIES** CAN BE ADJUST TO MEET THE NEEDS OF SPECIFIC MISSIONS.

THE MODULAR DESIGN ALLOWS THE SOLDIER TO ATTACH ADDITIONAL GEAR TO THE BACKPACK WHILE KIPPING IT FULLY OPERATIONAL.

FURTHER ADJUSTMENT FOR DELICATE TACTICAL EQUIPMENT CAN ALSO BE ADDED TO THE BAG.





# THE COMMANDO SERIES



**CMD-72K**

SIZE	85/35 cm
VOLUME	85L
LOAD CAP'	72 HUERS
BACK SUPORT	FRAME
TEXTILE	cordura



**CMD-48**

SIZE	67/35 cm
VOLUME	70L
LOAD CAP'	48 HUERS
BACK SUPORT	STD
TEXTILE	cordura



**CMD-24K**

SIZE	60/35 cm
VOLUME	55L
LOAD CAP'	24 HUERS
BACK SUPORT	FRAME
TEXTILE	cordura



**CMD-12**

SIZE	45/30 cm
VOLUME	25L
LOAD CAP'	12 HUERS
BACK SUPORT	STD
TEXTILE	cordura

# ***BACK SUPPORT***

ALL THE BAGS IN THE **COMMANDO SERIES** COMES WITH STANDARD **T9-DESIGN TACTICAL BACK SUPPORT**.

THE ADJUSTABLE SHOULDER STRAPS AND WAIST-BELT ARE SPECIALLY DESIGNED FOR TROOPS IN DEPLOYMENT. UNLIKE MANY BACK- SYSTEMS THE **T9-DESIGN TACTICAL BACK SUPPORT** IS A LOW PROFILE PADDED ONE WHICH KEEPS THE BACKPACK AS CLOSE TO THE SOLDIERS BACK AS POSSIBLE WHILE CARRYING IT WITH AN ARMORED VEST, AS SOLDIERS OFTEN DO.

THE FRAME IS AN OPTIONAL FEATURE WITH THE 24, 48 & 72 HOURS BACKPACKS, USED WHEN EXTREME WEIGHT OR ADITIONAL GEAR IS ADD.





# ***COMMANDING STATIONS***

Whether you seek off-the-shelf or tailor designed equipment, **T9 Design**'s uniqueness lies in its ability to customize perfect solutions specific to the needs of our clients. We provide elite service for individual clients searching for one-of-a-kind solutions.





# ***TACTICAL SOLUTIONS***

FOLDING ASSAULT LADDER is designed to be used in urban warfare scenarios. The folding frame, a unique T9-DESIGN development, provides the unit with a tactical advantage when moving through constructed area.





# ***COMBAT UNIFORMS***

When it comes to government issue uniforms that meet military specifications **T9-DESIGN** is your highly reputable source for wide variety of **military uniforms for sale**. As trusted suppliers for a many units of the Armed Forces, we carry a complete array of Army and Military uniforms.



# ***MATCH YOUR GEAR***

 **T9 DESIGN**  
TACTICAL SOLUTIONS

ISO 9001:2008  
**RONET**  
ACCREDITED  
Quality Management System

 **ANAB**  
ACCREDITED  
MANAGEMENT SYSTEMS  
CERTIFICATION BODY